

- iPad in kiosk frame
- Kiosk base
- Charging plug
- One set of keys for all three kiosks (Do **NOT** lose this set of keys!)

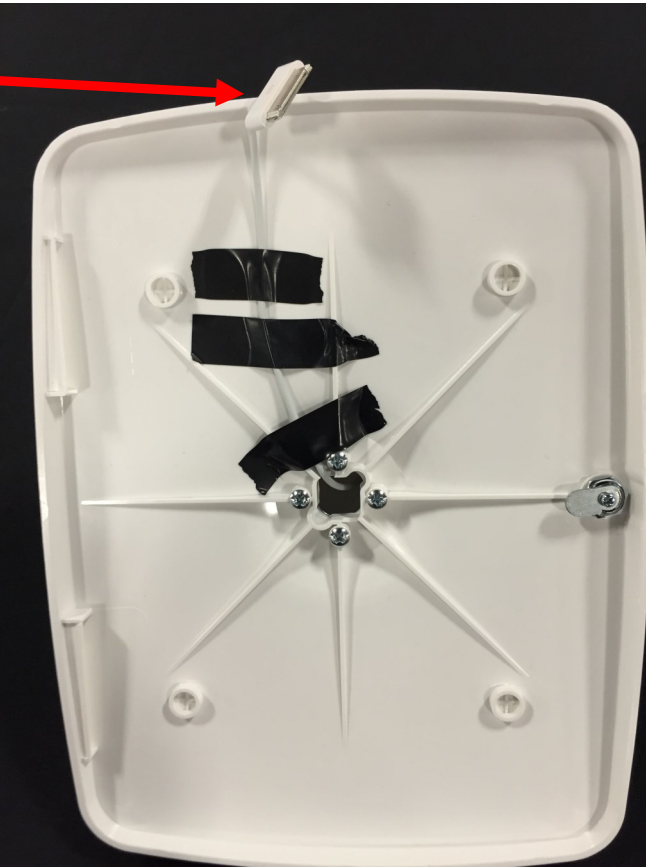


Power cord is coiled inside base of kiosk. It is taped down on purpose. Please do not un-tape.

There is a cord “cut-out” in the bottom of the kiosk base so that it will stand flat on the table top. Be sure to run the cord through that cut-out.

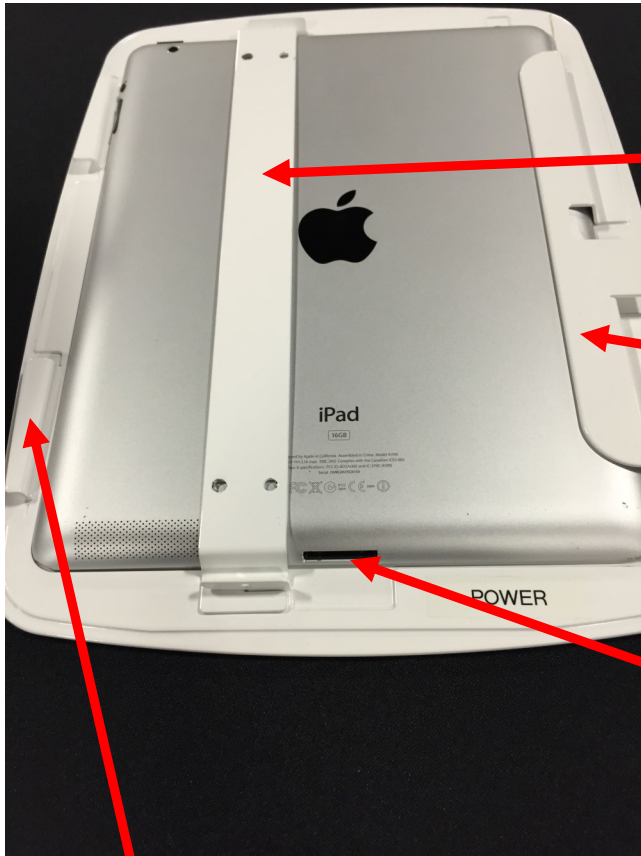
When you re-pack the base for shipping, coil the cord back into the base.

This connects to the base of the iPad. Please be sure that it doesn't get caught/crimped when you lock the iPad into the kiosk base.



The other end of the power cord slides into the USB port on the plug. It will only go in one way, so if it doesn't fit, don't force it. Just flip the cord connector over and try again.





This is the back of the iPad already mounted in the kiosk frame.

This bar slides off if you need to remove the iPad from the frame itself.

The iPad slides \*under\* this metal lip when you place it in the frame.

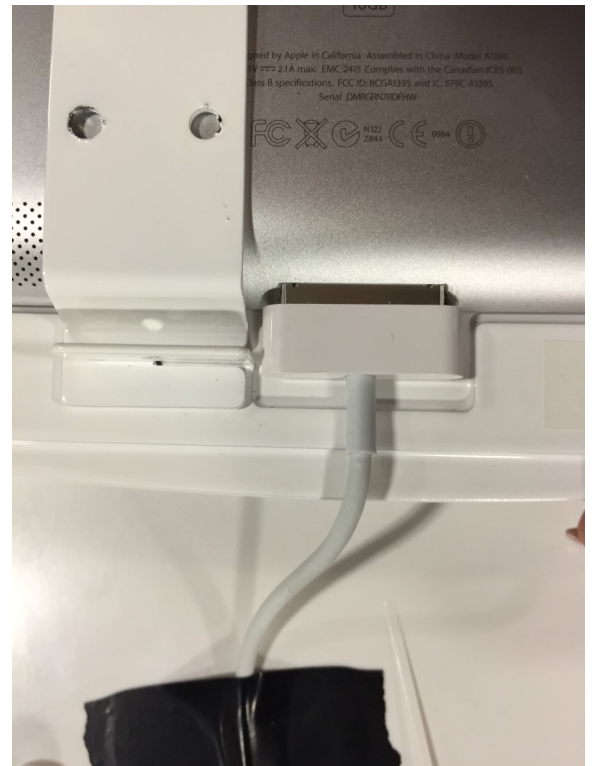
This is where the power connection plugs into the base of the iPad.

“Clips” that slide into the kiosk base so that the iPad frame fits snugly into the base.

This is the power button for the iPad. Touch it once and it will put the iPad to “sleep”. Hold it down for a few moments and it will power the unit off.







To plug the iPad in, slide the connector into the power slot on the bottom of the tablet. This isn't hard to do, but it can be awkward the first few times you try. Please do *\*not\** untape the cord from the case. The connector will only work one way, so if it doesn't slide in easily, turn it over and try again.



The iPad “frame” has two metal “clips” (see page 3) that slide into place with the base. This part is somewhat tricky ... so take it slow, making sure that the clips slide into place, and the power cord is not caught in the edge of the frame. The iPad frame will “snap” into place when everything is lined up correctly.

Once the clips are properly slid into the base, and the cord is not caught in the edge of the frame, the iPad/frame will fit snugly into the base with no gaps.





Once the iPad frame is set correctly into the base, you will need to lock it in. The locking mechanism is found on the back of the base.

Holding the frame firmly in the base, put the key in the lock and turn 1/4 turn. The key will only go in one way, so it may take a moment to get it seated correctly in the lock.

The lock can be temperamental, so please be patient and keep trying. It will turn and lock easily when you have the key properly fitted into the lock.



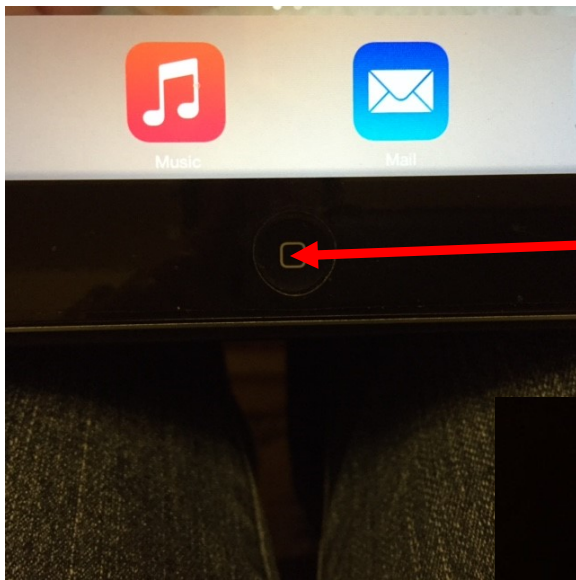




This is what the unit looks like once it is properly assembled. Plug the iPad cord into an extension cord to keep it charged for the weekend.

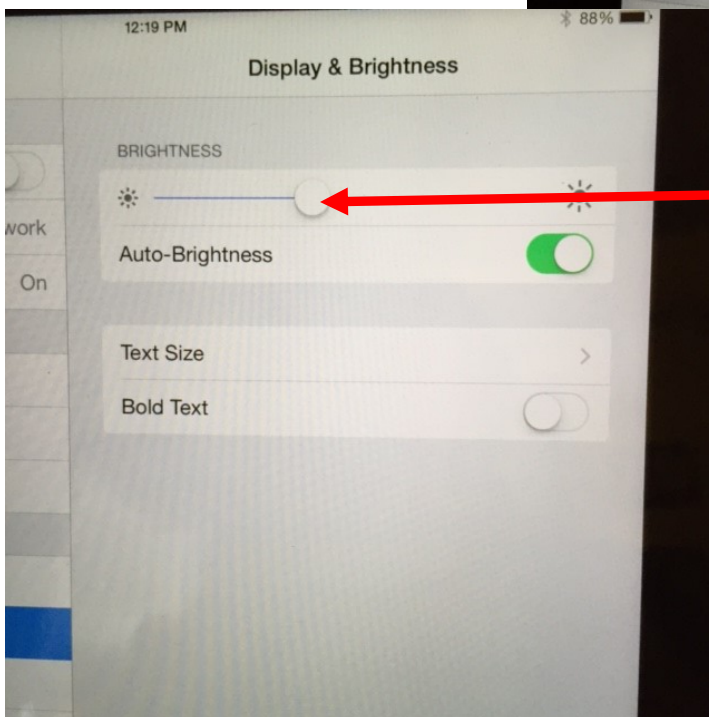
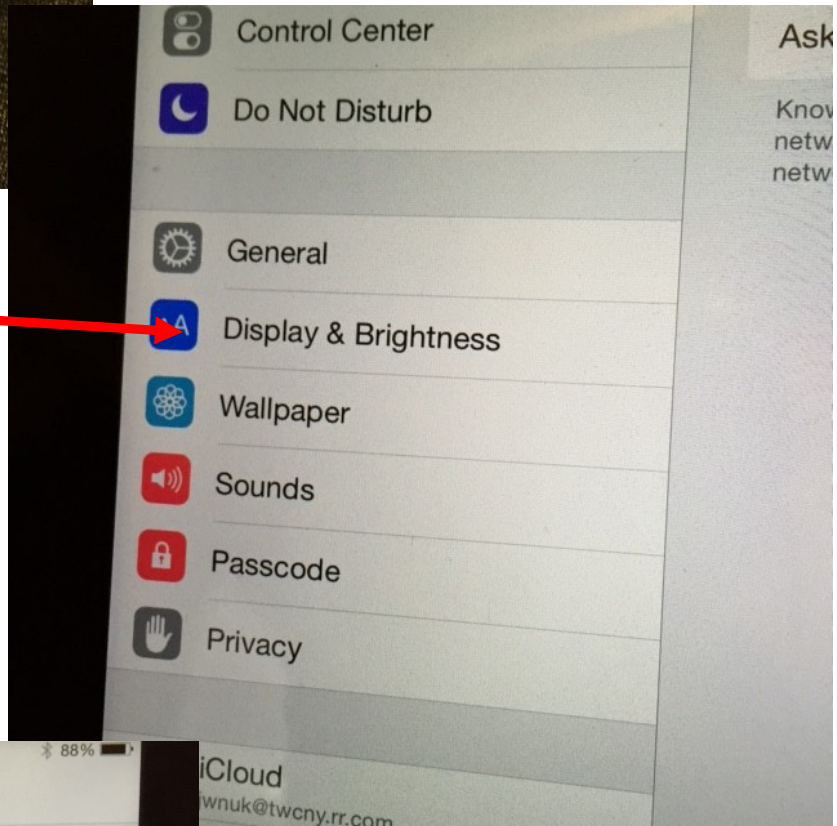


This is the home screen that will appear on the iPad when it is turned on.



If the display on your iPad is very “dim”, you can increase the brightness to make it easier to read. You will need to remove the iPad from the frame to do this. Once you get it out of the frame, push on the “home button” found on the bottom of the iPad.

Find the “Settings” button on the screen and tap it. Once the settings page opens, tap on Display & Brightness.



You can adjust brightness by using the slider. This is the only setting you may have to adjust. Please leave the rest as they are already set.

Once the brightness is adjusted, click the home button again to get back to the desktop.

Then click on the Kiosk Pro icon to get back to the IG samples display.